

ZT-3115(E)/3116(E)/3715(E)/3716(E)
Fanless Touch POS Terminal
User Manual



FCC NOTES

This equipment has been tested and found to comply with the limits for a Class A digital device, pursuant to part 15 of the FCC Rules. These limits are designed to provide reasonable protection against harmful interference when the equipment is operated in a commercial environment. This equipment generates, uses, and can radiate radio frequency energy and, if not installed and used in accordance with the instruction manual, may cause harmful interference to radio communications. Operation of this equipment in a residential area is likely to cause harmful interference in which case the user will be required to correct the interference at his own expense. This device complies with part 15 of the FCC Rules. Operation is subject to the following two conditions: (1) This device may not cause harmful interference, and (2) this device must accept any interference received, including interference that may cause undesired operation.

CE CLASS A WARNING

This equipment is compliant with Class A of CISPR 32. In a residential environment this equipment may cause radio interference.

AVERTISSEMENT CE CLASSE A

Cet équipement est conforme à la classe A de CISPR 32. Dans un environnement résidentiel, cet équipement peut provoquer des interférences radio.

WARRANTY LIMITS

Warranty will terminate automatically when the machine is opened by any person other than the authorized technicians. The user should consult his/her dealer for the problem happening. Warranty voids if the user does not follow the instructions in application of this merchandise. The manufacturer is by no means responsible for any damage or hazard caused by improper application.

LIMITES DE GARANTIE

La garantie prend fin automatiquement lorsque la machine est ouverte par une personne autre que les techniciens autorisés. L'utilisateur doit consulter son revendeur pour le problème qui se produit. La garantie s'annule si l'utilisateur ne suit pas les instructions d'application de cette marchandise. Le fabricant n'est en aucun cas responsable de tout dommage ou danger causé par une mauvaise application.

警告使用者

此為甲類資訊技術設備，於居住環境中使用時，可能會造成射頻擾動，在此種情況下，使用者會被要求採取某些適當的對策。

SAFETY INSTRUCTIONS

Never open the equipment. For safety reasons, the equipment should be opened and installed only by qualified skilled person. The power outlet socket must be located near the equipment and must be easily accessible. This equipment is not suitable for use in locations where children are likely to be present.

16960900010 Ver. A0

<http://www.posiflex.com>

CONSIGNES DE SÉCURITÉ

Ne jamais ouvrir l'équipement. Pour des raisons de sécurité, l'équipement doit être ouvert et installé uniquement par une personne qualifiée. La prise de courant doit être située à proximité de l'équipement et doit être facilement accessible. Cet équipement ne convient pas à une utilisation dans des endroits où des enfants sont susceptibles d'être présents.

WARNING

Power cord shall be connected to a socket-outlet with earthing connection.

ATTENTION

Le cordon d'alimentation doit être connecté à une prise de courant avec mise à la terre.

BATTERY WARNING

Risk of explosion if battery is replaced by an incorrect type. Dispose of expended battery in accordance with local disposal regulations.

AVERTISSEMENT DE BATTERIE

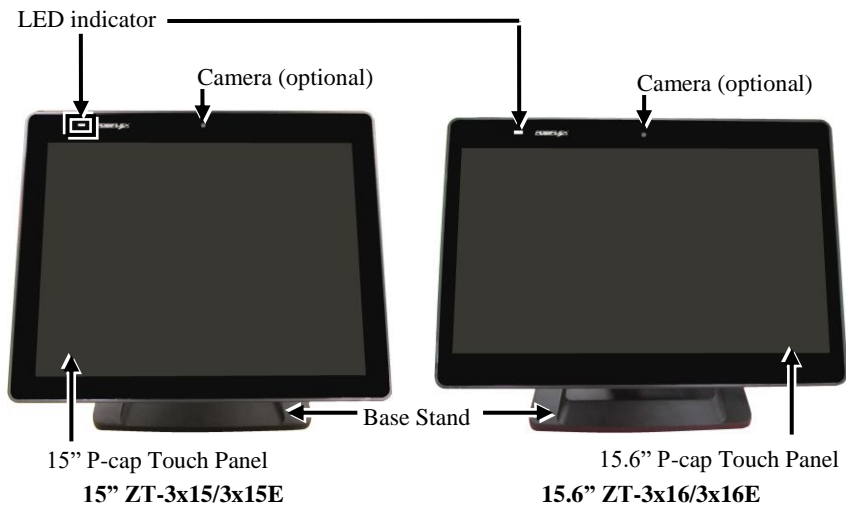
Risque d'explosion si la batterie est remplacée par un type incorrect. Jetez la batterie usagée conformément aux réglementations locales en matière d'élimination.

警告

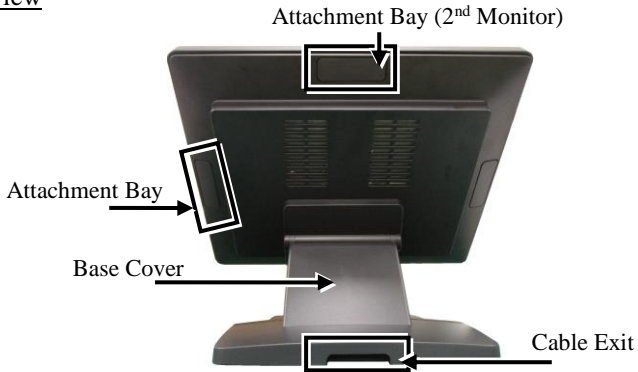
本電池如果更換不正確會有爆炸的危險，請依製造商說明書處理用過之電池。

Views of ZT-3x15/3x16/3x15E/3x16E

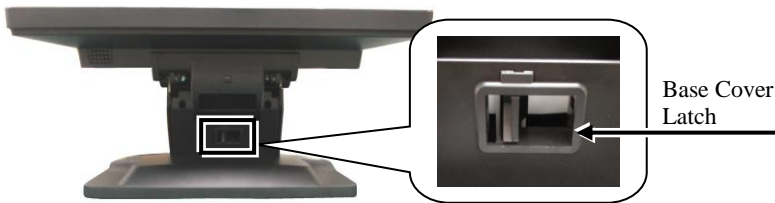
Front View



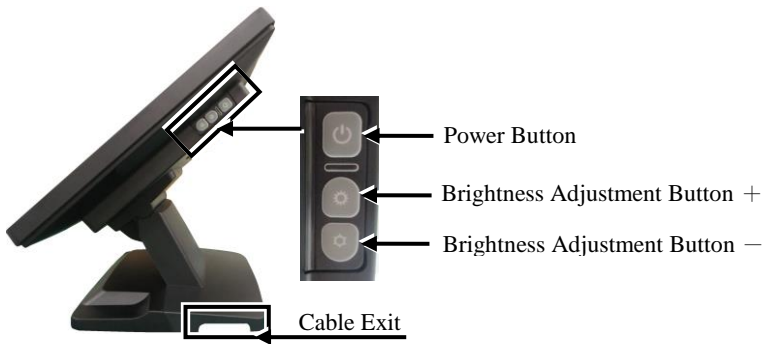
Rear View



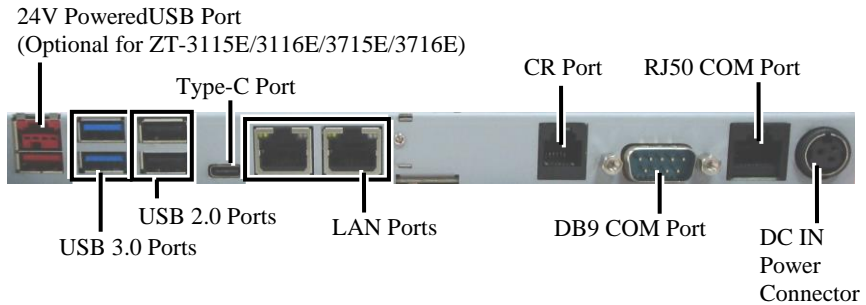
Base Stand View



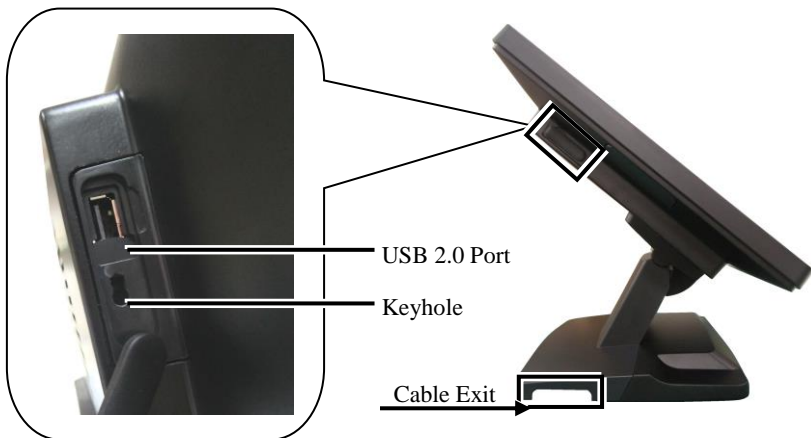
Left-Side View



View of I/O Interface of ZT-3x15/3x16/3x15E/3x16E Bottom Side View



Side View



Positioning your POS for a Perfect Viewing Angle

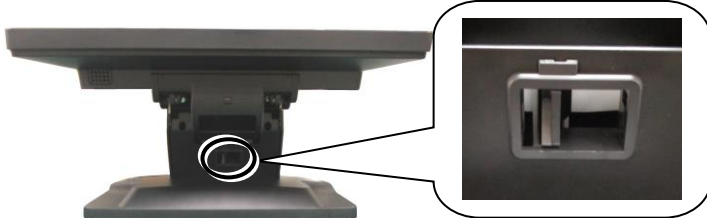
Steady the base with one hand, and then tilt the screen in the direction shown by the arrow in the figure. Please do NOT press on the LCD panel while setting up the tilt angle.



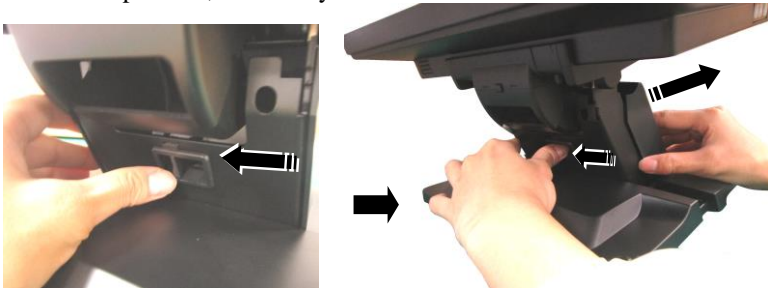
Installing and Routing Cables

The following provides instructions required to install your cables.

1. Rotate the screen to the horizontal position like the below picture, and there is a base cover latch on the front side of the base stand.



2. Push the latch (toward left side) through the direction of the arrow like below pictures, and then you can release the base cover.



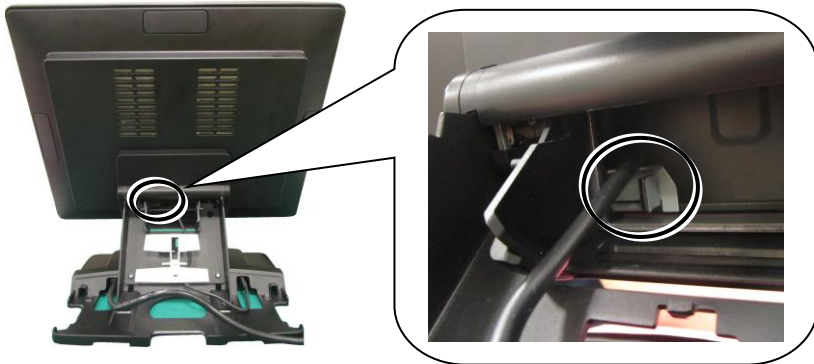
3. Take off the base cover.



4. Rotate the screen to the upright position like below pictures.



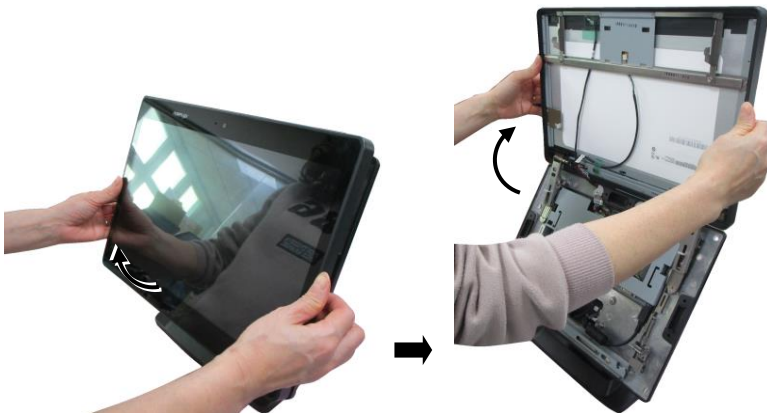
5. There is a latch inside cable exit on the rear side of the POS terminal.



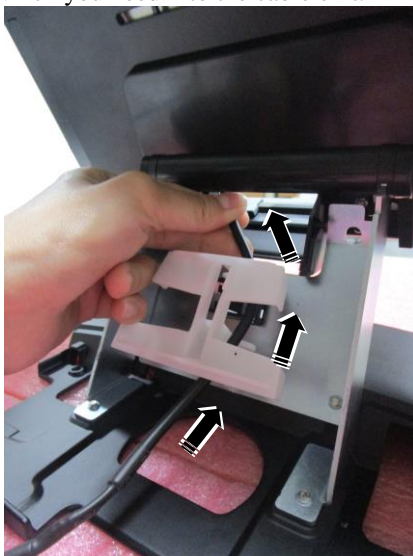
6. Push the latch with the thumb of the left hand, and then the touch monitor will release automatically.



7. Open the touch monitor with two hands, and then you can do the maintenance work.



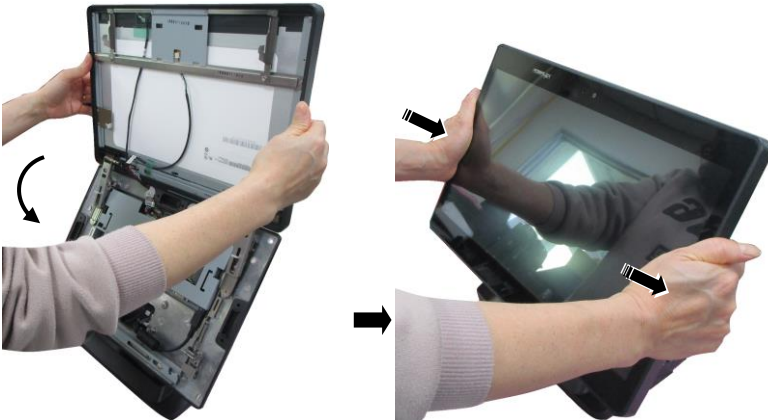
8. Pass the cable which you need into the cable exit.



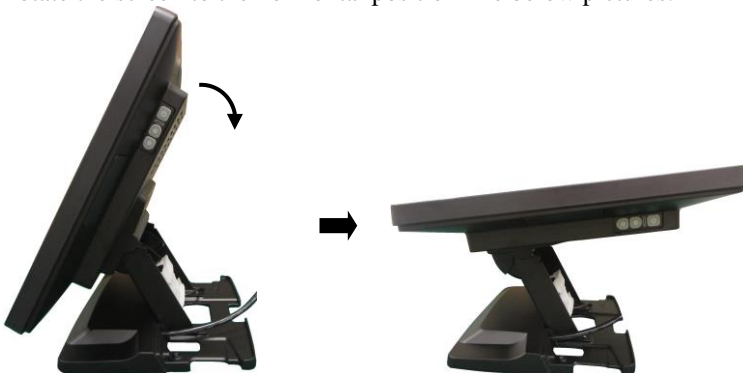
9. Connect the cables to the I/O port.



10. To close the touch monitor, you must press down on both sides of the screen with both hands.



11. Rotate the screen to the horizontal position like below pictures.



12. Close the base cover back to the POS terminal.



13. Make sure the cable could be pulled out of the cable exit from the bottom of the base.



Cable connectors like the connector of LAN cable have to be gently inserted until a click sound is given. It is recommended that the I/O ports, such as COM (DB9) port, should be fastened with connector thumb screws after the I/O cable connectors are completely connected. And please make sure that each connector has to be connected to the right peripheral device in the right way.

CAUTION: On doing insertion or extraction of a cable connector, please always hold the connector head itself instead of pulling the cable wire. Doing this could damage the cables, which is considered as an artificial damage and is not covered by the warranty. The means of power cord should be connected to a socket-outlet with earthing connection.

ATTENTION: Lors de l'insertion ou de l'extraction d'un connecteur de câble, veuillez toujours tenir la tête du connecteur elle-même au lieu de tirer le fil du câble. Cela pourrait endommager les câbles, ce qui est considéré comme un dommage artificiel et n'est pas couvert par la garantie. Le cordon d'alimentation doit être connecté à une prise de courant avec mise à la terre.

To Use the USB Port on the Side

1. Find the USB key in the accessory pack.



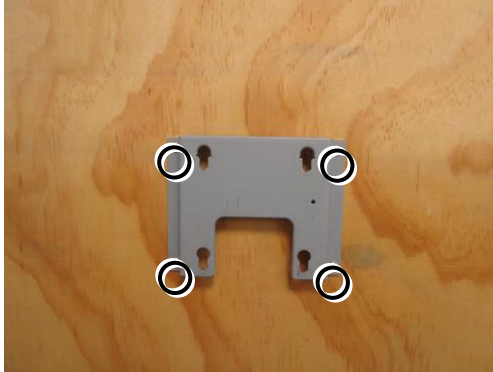
2. Insert the USB key into the keyhole, and then turn it clockwise.



3. You can use the USB port after unlocking it. Be note that the USB key **CANNOT** be removed when the USB port is unlocked.

Optional Wall Mounting

1. **For cement wall**, to apply the plastic cotters, please drill 4 holes on the wall. Hole diameter should be 1/4" or 6.35 mm each. Hole depth should be at least 1 and 3/8" or 35 mm. Apply the 4 plastic cotters into the drilled holes. Fix the wall side mount bracket onto the wall with four self-tapping Ø3.5-16L screws.



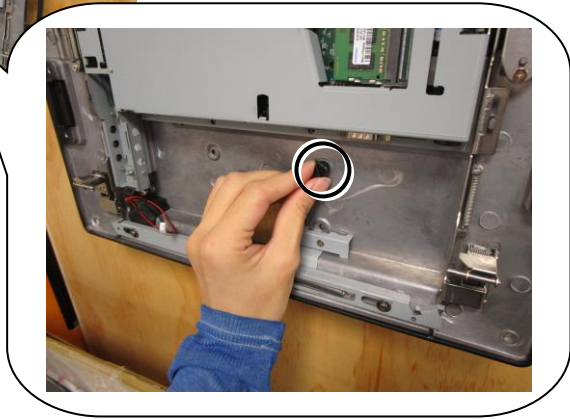
2. Fix the rear cover with four shoulder head screws.



3. Hook the ZT POS terminal to the mounting bracket.



4. Open the touch monitor, and then fix one thumbscrew.



5. Connect the power cable, and other cables that you need. Make the cable pass through the cable exit on the bottom side of the ZT POS terminal.



Installing Optional Upgrade Kits and Peripherals

ZT-series is an expandable model which allows you to upgrade its own capacity by additionally installing multiple peripheral devices, such as magnetic stripe reader (MSR), RFID, or fingerprint, and 2nd rear-mount POS monitor, according to your preference. The following will give you brief instructions on how to expand on your current POS system with these optional upgrade kits. Before proceeding with the installation of peripherals, please make sure the POS system is completely shut down to prevent damage.

➤ **Installing Side Mount Upgrade Kits**

Located at left side on the back of your system unit, side mount compartment is mainly used for installation of side-mounted equipment, such as magnetic stripe reader. For detailed installation instructions, please refer to the technical manual or the user manual specific to the device which you intend to mount onto the terminal.

➤ **Installing Rear-Mount POS Monitor**

ZT-series POS terminal also allows you to additionally install rear-mount POS monitor to expand its functionality. Regarding the step-by-step instructions which aim to help you mount it onto your POS system, Please refer to the technical manual and the user manual specific to the device you intend to install.

Status LED Indicator

LED status indicator, which is located at the top left edge of the LCD panel, is mainly responsible for notifying users of the current system status by emitting various LED signals. In the chart provided below, it describes all the possible LED status as a quick reference.

| LED Status | Description |
|------------|------------------|
| Off | System power OFF |
| Green | System standby |
| Blue | System power ON |

Powering ON/OFF the POS Terminal

Power ON the POS Terminal

Press down the power button to power on the POS.

Power OFF the POS terminal

In most cases, press the power button of the POS to power the system off. If the terminal fails to turn off the machine for unknown reasons, please be advised to hold the power button more than 10 seconds to force a shutdown of the system.

Installing an Operating System

You are highly advised not to install an operating system on ZT-series without professional instructions. Improper installation could lead to system malfunction or failure. Please contact with your dealers about the issues of operating system installation.

Driver Download

If your POS terminal is shipped without OS pre-installed, please download the relevant driver that you need from the Posiflex website (<http://www.posiflex.com/en-global/Download/download>).

Performing System Recovery

For ZT-series model with preloaded operating systems, Recovery DVD which includes useful utilities will be provided in the package to assist you in efficiently restoring or repairing your damaged system. However, you are not encouraged to recover your system without the help of system integrators. Please be advised to contact your service center for further assistance with system recovery.

Operation Environment

To prevent ZT-series from overheating, it is suggested to position your terminal in a well-ventilated working environment. In doing so, please be advised to keep the POS terminal at least 25mm away from other devices to ensure the machine is properly cooled down and functioning normally.

Specifications

ZT-3115/3115E/3116/3116E

| | ZT-3115/3115E | ZT-3116/3116E |
|-----------------------|------------------------------------------------------------------------------------------------------------------------|----------------------------------|
| CPU | Intel Elkhart Lake J6412 | |
| System Memory | 2 x DDR4 SO-DIMM | |
| Storage Device | 2 x M.2 port (support SATA interface only, M.2 2280 / B+M key) | |
| OS Support | Windows 10 IoT | |
| vPro | N.A | |
| TPM | Yes, TPM2.0 (Intel PTT) | |
| RAID | N.A | |
| Power Supply | 24V / 60W power adaptor (default), 24V / 120W power adaptor (optional, with 24V PoweredUSB port for ZT-3115E/3116E) | |
| LCD Panel | 15" TFT LCD with LED backlight | 15.6" TFT LCD with LED backlight |

| | | |
|------------------------------------|---------------------------------------------------------------------------------------------------------------------------------|--------------------------------------------------------------------------------------------|
| LCD Resolution | 1024 x 768 | 1920 x 1080 |
| Touch Sensor | P-CAP touch | |
| Camera | Wide angle camera located on top edge of the touch panel (optional) | |
| Serial Port | 2 ports, 1 x DB9 + 1 x RJ-50 (DB9 COM port supports selectable RS-232/422/485) | |
| USB Port | 2 x USB 3.0 type A ports (on I/O plate) + 2 x USB 2.0 type A ports (on I/O plate) + 1 x USB 2.0 type A port (on the side) | |
| PoweredUSB Port | 1 x 24V poweredUSB port (optional for ZT-3115E/3116E) | |
| LAN Port | 2 x 10/100/1000 Mb | |
| Display Port | 1 x eDP connector (internal header, support 10.1" 2 nd monitor) + 1 x type C port | |
| CR Port | 1 port, controlling 2 CR | |
| Audio Port | 1 x internal speaker | |
| Extension Slot | 1 x M.2 slot (M.2 2230 / E key for WiFi/BT module optional) | |
| Dimension (W x H x D in mm) | 352.7 x 287.4 x 49.3 mm (without base stand) 352.7 x 318.2 x 205.7 mm (with base stand) | 375.2 x 257.2 x 49.3 mm (without base stand) 375.2 x 303.1 x 205.7 mm (with base stand) |
| Net Weight | 4.9 kg | 4.5 kg |
| Environmental Requirements | Operating : 0°C ~ 40°C, 20%RH - 90%RH Storage : -20°C ~ 60°C, 10%RH - 90%RH | |
| Regulation Rules | FCC/CE | |
| Attachment | | |
| ZA-101 | MSR attachment | |
| ZA-301 | 3-in-1 MSR + fingerprint sensor + RFID attachment | |
| ZA-302 | 3-in-1 MSR + iButton + RFID attachment | |
| LM/TM-5011 | 10.1" 2 nd display | |
| LM/TM-5011P-ZT | 10.1" Portrait 2 nd display | |

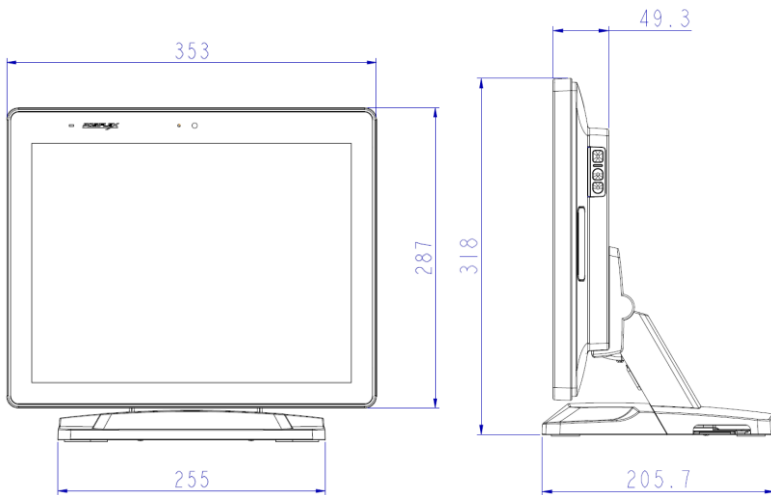
ZT-3715/3715E/3716/3716E

| | ZT-3715/3715E | ZT-3716/3716E |
|----------------------------------------|-----------------------------------------------------------------------------------------------------------------------------------|-----------------------------------------------------------------------------------------------------|
| CPU | Intel Tiger Lake UP3 Core i3-1115G4E Intel Tiger Lake UP3 Core i5-1145G7E | |
| System Memory | 2 x DDR4 SO-DIMM | |
| Storage Device | 2 x M.2 port (support SATA interface only, M.2 2280 / B+M key) | |
| OS Support | Windows 10 IoT | |
| vPro | Yes, (only i5-1145G7E support) | |
| TPM | Yes, TPM2.0 (Intel PTT) | |
| RAID | Yes | |
| Power Supply | 24V / 60W power adaptor (default), 24V / 120W power adaptor (optional, with 24V PoweredUSB port for ZT-3715E/3716E) | |
| LCD Panel | 15" TFT LCD with LED backlight | 15.6" TFT LCD with LED backlight |
| LCD Resolution | 1024 x 768 | 1920 x 1080 |
| Touch Sensor | P-CAP touch | |
| Camera | Wide angle camera located on top edge of the touch panel (optional) | |
| Serial Port | 2 ports, 1 x DB9 + 1 x RJ-50 (DB9 COM port supports selectable RS- 232/422/485) | |
| USB Port | 2 x USB 3.0 type A ports (on I/O plate) + 2 x USB 2.0 type A ports (on I/O plate) + 1 x USB 2.0 type A port (on the side) | |
| PoweredUSB Port | 1 x 24V poweredUSB port (optional for ZT-3715E/3716E) | |
| LAN Port | 2 x 10/100/1000 Mb | |
| Display Port | 1 x eDP connector (internal header, support 10.1" 2 nd monitor) + 1 x type C port | |
| CR Port | 1 port, controlling 2 CR | |
| Audio Port | 1 x internal speaker | |
| Extension Slot | 1 x M.2 slot (M.2 2230 / E key for WiFi/BT module optional) | |
| Dimension (W x H x D in mm) | 352.7 x 287.4 x 49.3 mm (without base stand) 352.7 x 318.2 x 205.7 mm (with base stand) | 375.2 x 257.2 x 49.3 mm (without base stand) 375.2 x 303.1 x 205.7 mm (with base stand) |

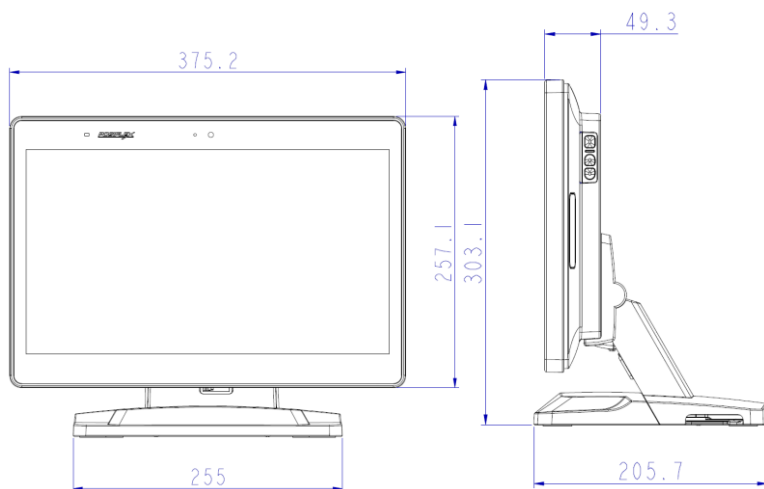
| | | |
|-----------------------------------|--------------------------------------------------------------------------------|--------|
| Net Weight | 4.9 kg | 4.5 kg |
| Environmental Requirements | Operating : 0°C ~ 40°C, 20%RH - 90%RH Storage : -20°C ~ 60°C, 10%RH - 90%RH | |
| Regulation Rules | FCC/CE | |
| Attachment | | |
| ZA-101 | MSR attachment | |
| ZA-301 | 3-in-1 MSR + fingerprint sensor + RFID attachment | |
| ZA-302 | 3-in-1 MSR + iButton + RFID attachment | |
| LM/TM-5011 | 10.1" 2 nd display | |
| LM/TM-5011P-ZT | 10.1" Portrait 2 nd display | |

Outline Dimension

ZT-3115/3115E/3715/3715E



ZT-3116/3116E/3716/3716E



※ The product information and specifications are subject to change without prior notice. To get the detailed information on the ZT-3x15/3x16/3x15E/3x16E, please check this model from Posiflex Global Website (<http://www.posiflex.com/en-global/Download/download>).

<MEMO>

<MEMO>